




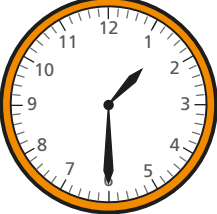

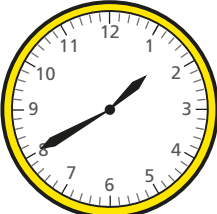
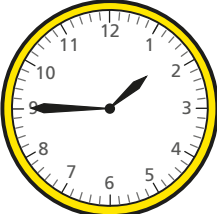





# Telling time to 5 minutes

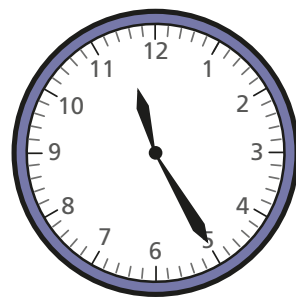
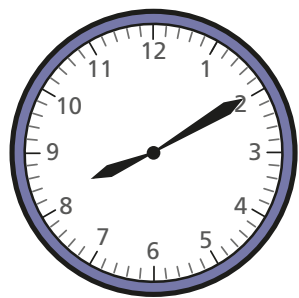
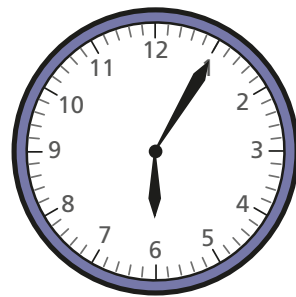
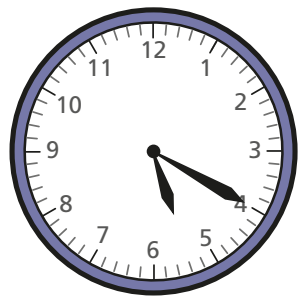
1 Complete the table.

	5 past 1
	<input type="text"/> past 1
	
	
	
	

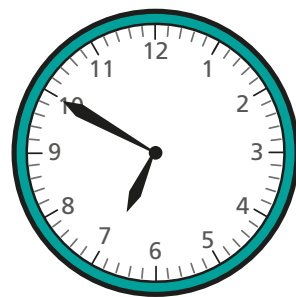
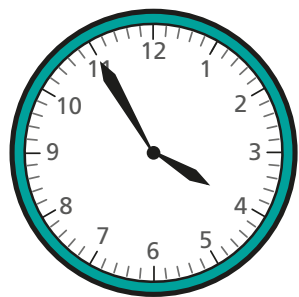
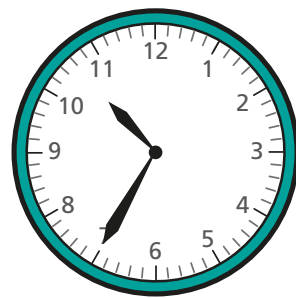
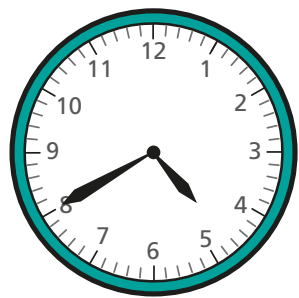
2 Complete the table.

	25 to 2
	<input type="text"/> to 2
	
	
	
	

3 Write the time shown on each clock.



4 Write the time shown on each clock.

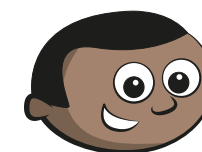
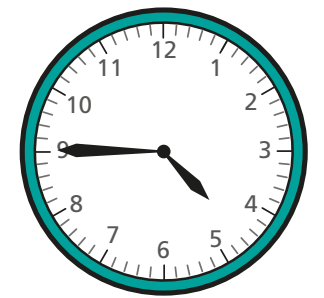


5 Jack and Mo read the time on the clock.



It is quarter to 5

Jack



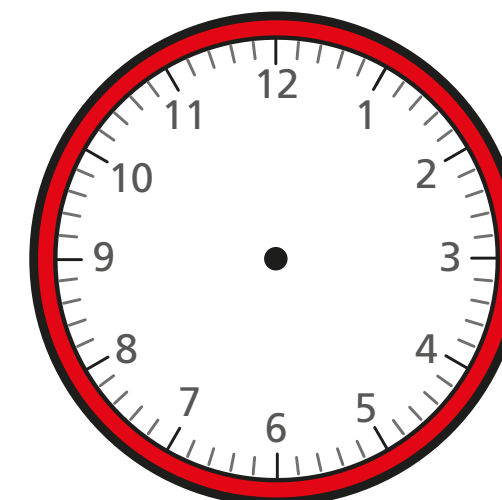
It is 15 minutes to 5

Mo

Who is correct? \_\_\_\_\_

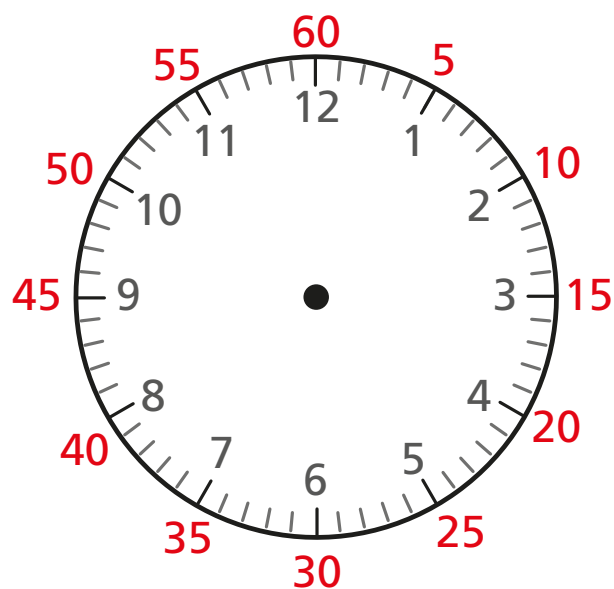
How do you know?

6 Draw on the clock to show 25 minutes past 3



# Hours and days

- 1 Complete the sentences.  
You can use the clock to help you.



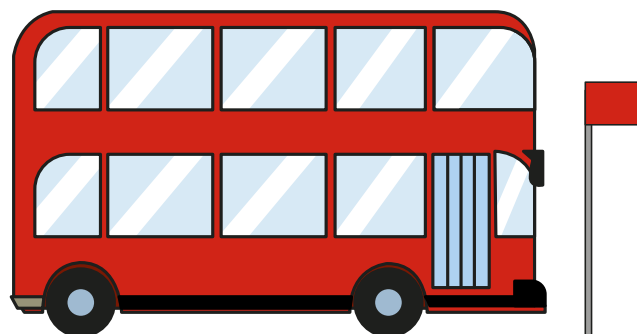
- a) There are  minutes in 1 hour.
- b) There are  minutes in half an hour.
- c) There are  minutes in quarter of an hour.
- d) There are  minutes in one and a half hours.

- 2 Complete the table.

60 minutes earlier	Time now	30 minutes later
3 o'clock		half past 4

- 3 Annie and her mum take the bus to Gran's house.

The bus ride takes one hour.



- a) What time will Annie and her mum arrive if the bus leaves at 9 o'clock?

\_\_\_\_\_

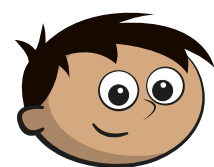
- b) Annie and her mum get the bus home.

They get off the bus at quarter to 2

What time did they get on the bus?

\_\_\_\_\_

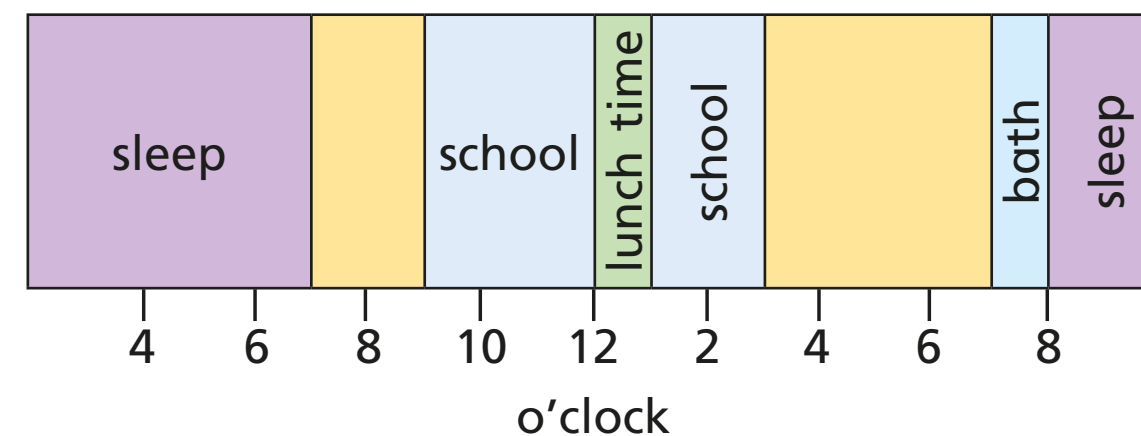
- 4 Amir went to the cinema.



The film started at half past two and lasted for 90 minutes.

What time did the film end? \_\_\_\_\_

- 5 The bar model shows a section of Dexter's day.



- a) What time did Dexter go to bed?

\_\_\_\_\_

- b) What time did Dexter get up?

\_\_\_\_\_

- c) What do you think Dexter did between 7 o'clock and 9 o'clock in the morning?

- d) What was Dexter doing at 6 o'clock in the morning?

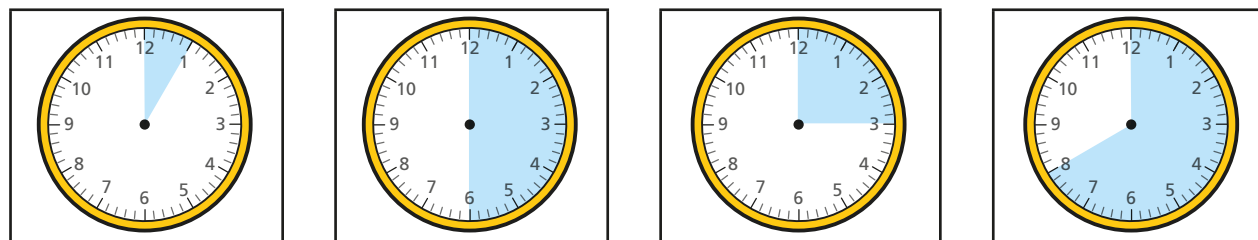
\_\_\_\_\_

- e) What could Dexter have been doing at 6 o'clock in the evening?

- 6 Work with a partner to draw a bar model showing your day.

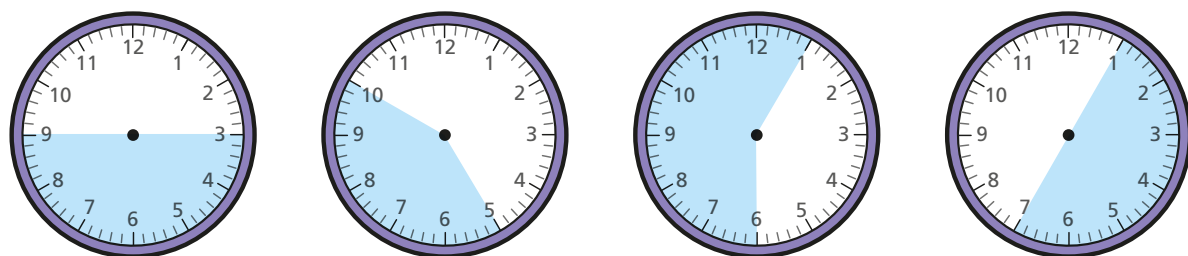
# Find durations of time

1 Match the durations on the clocks to the labels.



15 minutes      40 minutes      5 minutes      half an hour

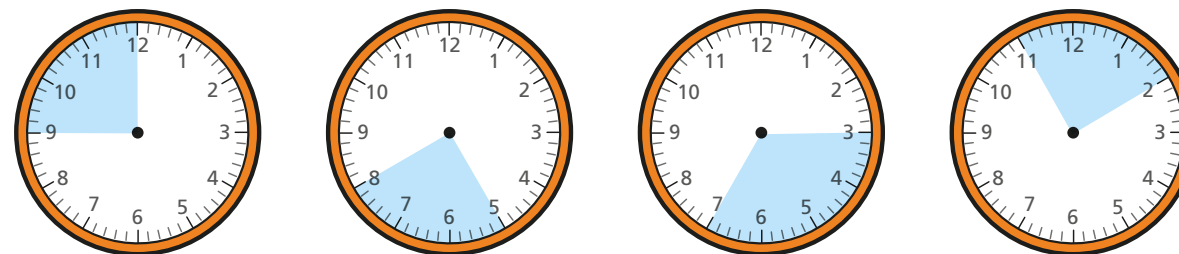
2 Tick all the clocks that show a 30-minute duration.



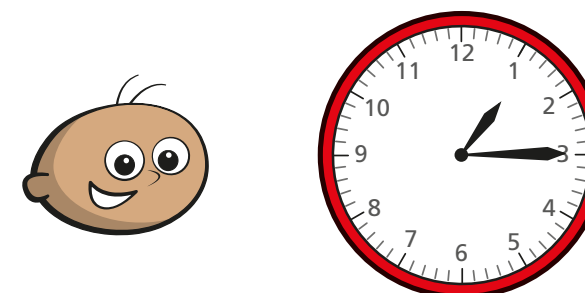
Talk to a partner about what you notice.



3 Tick all the clocks that show a 15-minute duration.

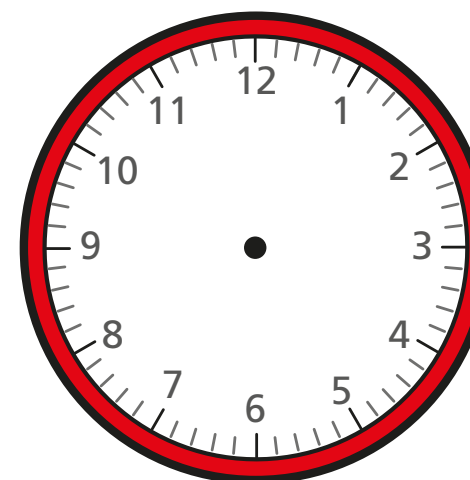


4 Tommy sat down to play a game at quarter past 1

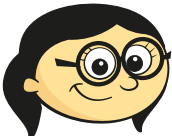

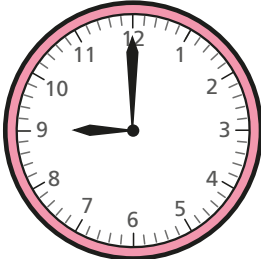
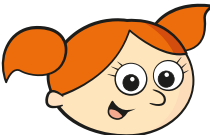
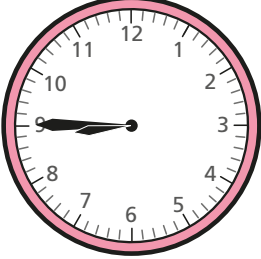
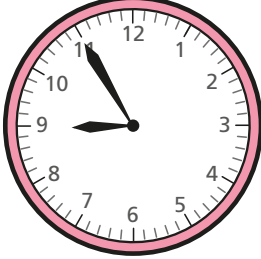

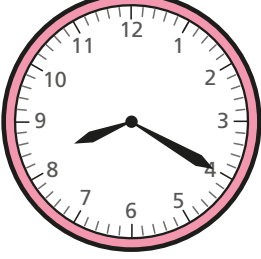
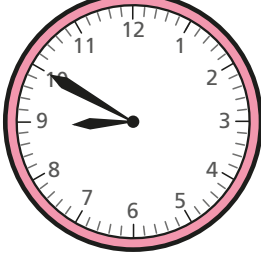


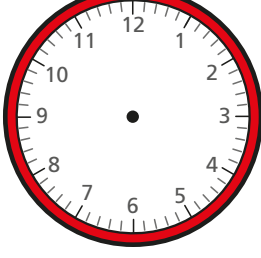

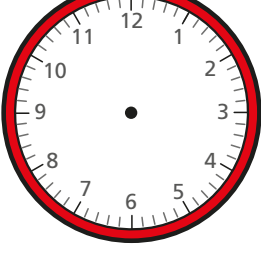
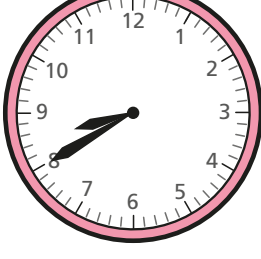


The game took 20 minutes.

Draw the hands on the clock to show what time the game finished.



- 5 The table shows information about some children's journeys to school.

Name of child	Left home	Arrived at school	Journey time
 Annie			30 minutes
 Alex			
 Jack			
 Mo			20 minutes
 Dexter			15 minutes



- a) Complete the table.  
b) Is each statement true or false?  
Circle your answers.

Annie arrived at school first. **true false**

Jack left home first. **true false**

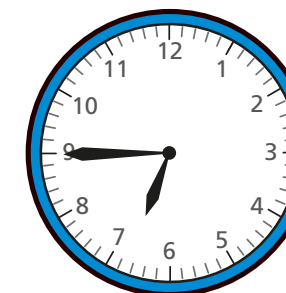
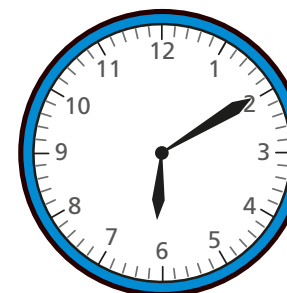
Mo and Dexter left home at the same time. **true false**

Annie left home before Jack. **true false**

Alex arrived at school after Jack. **true false**

Make up your own true or false question about the table to test your partner.

- 6 Whitney watched TV from 10 past 6 until quarter to 7



How long did she spend watching TV?

minutes



# Compare durations of time

1 Write  $<$ ,  $>$  or  $=$  to compare the durations of time.

a) 50 minutes  1 hour

b) quarter of an hour  15 minutes

c) half an hour  25 minutes

2 Write the times in order from shortest to longest.

90 minutes

one hour

45 minutes

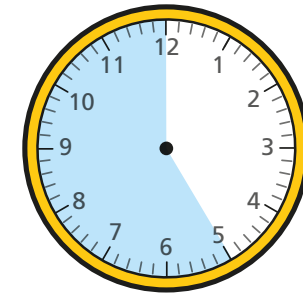
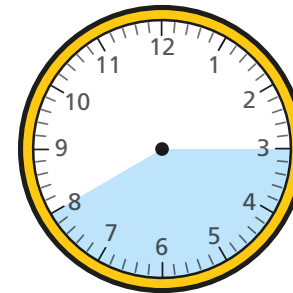
shortest \_\_\_\_\_

\_\_\_\_\_

longest \_\_\_\_\_

3 Circle all the durations of time that are longer than half an hour.

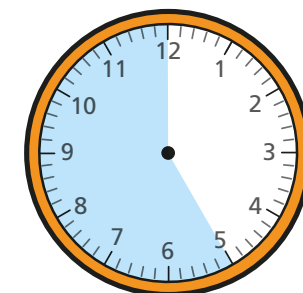
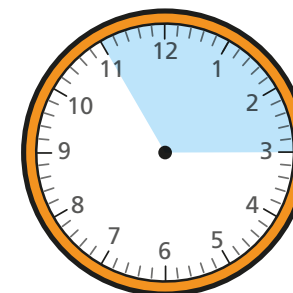
35 minutes



three-quarters of an hour

4 Circle all the durations of time that are shorter than half an hour.

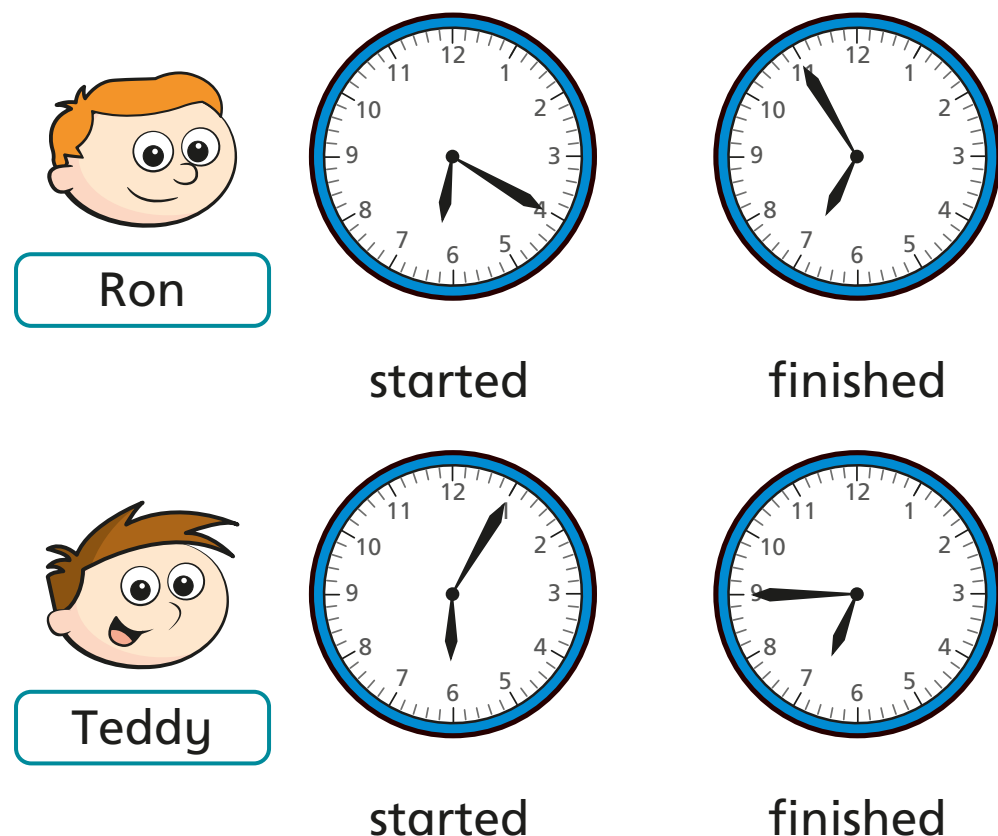
25 minutes



three-quarters of an hour



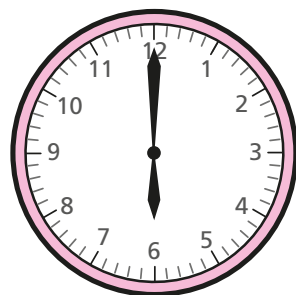
- 5 The clocks show the times that Ron and Teddy started and finished tidying their rooms.



Who tidied their room in the shortest amount of time? \_\_\_\_\_

How did you work this out? \_\_\_\_\_

- 6 Aisha and Kim both started their homework at 6 o'clock.



Aisha finished her homework at 25 past 6  
Kim's homework took her 10 minutes longer.  
What time did Kim finish her homework?

\_\_\_\_\_

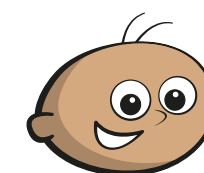
- 7 The children in Class 2 ran around the edge of the school field.

The table shows their start and finish times.

Name	Start time	Finish time
Tommy	10 past 2	half past 2
Amir	quarter past 2	half past 2
Dora	20 past 2	quarter to 3
Rosie	20 past 2	20 to 3

Use the information in the table to complete the sentences.

- a) \_\_\_\_\_ took the longest time.
- b) \_\_\_\_\_ took the shortest time.
- c) Tommy ran faster than \_\_\_\_\_.
- d)



Tommy

Amir and I  
took the same length  
of time because we  
finished together.

Is Tommy correct? \_\_\_\_\_

How do you know? \_\_\_\_\_



## Clock Hours and Minutes Interactive Visual Aid

1. Cut around the edge of both clock faces and cut the solid lines on the first clock to split the clock into 12 sections.
2. Fold the dotted lines upwards.
3. Glue the reverse of the central square from page 1 onto the middle of page 2, ensuring the clock sections match.
4. Punch a hole in the clock hands and then fasten them to the middle of the clock using a split pin.

