

REAL LIFE DRAGONS

Did you know that dragons really do exist?
In Indonesia there is a reptile called a *Komodo dragon*.

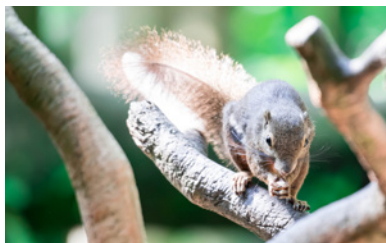


But what do komodo dragons eat?

A komodo dragon is a predator and will eat almost anything.

What is a predator?

These are examples of a komodo dragon's prey.



What does the word prey mean?

Use books or the internet to complete the fact file below to find about its habitat, diet and features.

KOMODO DRAGON

Animal group:

Description:

Diet:

Habitat:

How has it adapted to
its habitat?

Interesting facts:

THE DRAGON'S EYE



Watching...

glistening in the sunshine

like a precious, amber jewel.

Observing...

his surroundings

detecting movements near and far.

Peering...

from within his lair

ready to pounce at a moment's notice.

Staring...

at its prey in the distance

wings positioned, eyes fixed on its target.

Recall

1. Whose eye is being described?

2. Where is the dragon peering from?

.....

Vocabulary

1. ‘...*like a precious, amber jewel.*’

What does the word *precious* tell us about the jewel?

2. Find and copy a word that means *leap*.

3. What does the word *prey* mean?

.....

Inference

1. What movements might the dragon observe?

2. Why are the dragon's wings positioned when it is staring at its prey?

Predict

What do you think the dragon will do next?

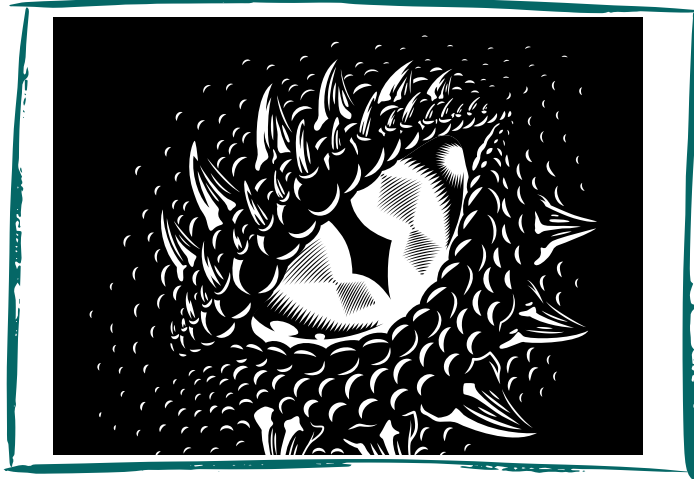
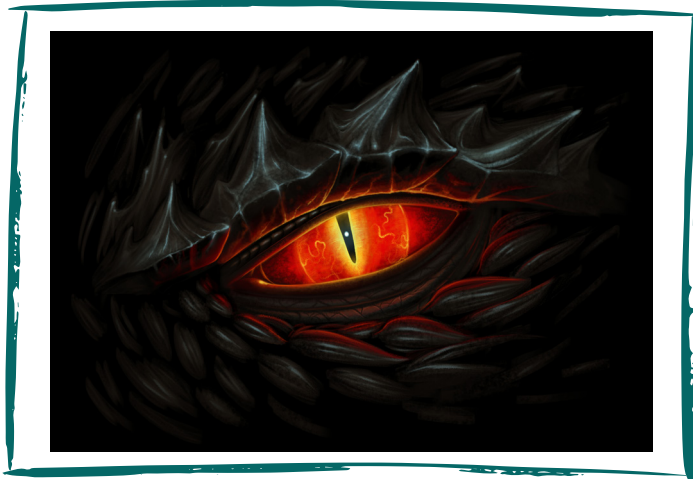
EXTRA CHALLENGE:

Read the poem and find examples of the language features that the author has used.

Synonyms:

Antonyms:

A simile:



THE DRAGON'S EYE

Look at the images of dragons' eyes.

Choose one, and write a poem similar to the model text in the reading practice.

Use the planning sheet below to record ideas before you write your poem.

WORDS AND PHRASES TO
DESCRIBE THE EYE:

THINGS THE DRAGON
MIGHT SEE:

WHAT MIGHT THE
DRAGON DO?

INTERESTING
VOCABULARY I COULD USE:

THE DRAGON'S EYE

Use the space below to write your own poem about a dragon's eye.

[illegible]



MY DRAGON

Use the space below to draw your own dragon!
What colour will they be? Will they fly? Are they friendly?
What will they eat? Where will they live?

Complete the fact file about your dragon.

SPECIES OF DRAGON:

DESCRIPTION:

DIET:

HABITAT:

HOW HAS IT
ADAPTED TO ITS HABITAT?

INTERESTING FACTS: