

St Bartholomew's Primary School Newsletter



St. Bartholomew's Church of England Primary School
Ann Street, Brighton, East Sussex, BN1 4GP

Telephone: 01273 692463 Fax: 01273 645239
Email: admin@st-bartholomews.brighton-hove.sch.uk
Website: www.st-bartholomews.brighton-hove.sch.uk

Headteacher: Ms K Blood
Deputy Headteacher: Miss F Keeling



Date: 18/09/20

Dear Parents and Carers,

School News

Welcome Back

It has been lovely to have all of the children back in school over the last fortnight. They have been fantastic at getting used to all of the new routines and are already learning so much in their new classes.

"It's been fun to see my friends." Sabawoon, Red Pandas

"I love being back at School." Preston, Pangolins

"It's weird being back at school! I am about to get my silver smiley!" Matilda, Red Pandas

"It's nice because I can meet my friends again!" Yushra, Red Pandas

"I would rather be at school because there is more to do." Nadia, Red Pandas.

Staffing

We welcome 5 new members of support staff this term – Miss Cottingham, Miss Chandler, Miss Cannon, Miss Armenti and Miss Bush. The children and staff have made them feel very welcome and we are pleased to have them with us.

Mrs Toliday has decided to retire after 34 years being at St Bartholomew's CE Primary School and will be leaving us on Friday 2nd October. She is clear that she doesn't want a fuss but we will ensure she gets a good, fuss-free send off. If you would like to make a donation towards a present, please pop it in an envelope and give it to a member of the Leadership team on the playground in the morning.

Eco Prize

You may recall that last Christmas, one of our amazing Year 6 pupils made sustainable Christmas Crackers and we promised to set up an Eco Prize and award her the first one! Of course, in the interim, lockdown happened so we didn't manage to present it to Ilona. We have managed to finalise details and are extremely grateful to Anna Brading for sourcing and donating the wonderful t-shirt, made sustainably.



St Bartholomew's Primary School Newsletter



St. Bartholomew's Church of England Primary School

Ann Street, Brighton, East Sussex, BN1 4GP

Telephone: 01273 692463 Fax: 01273 645239

Email: admin@st-bartholomews.brighton-hove.sch.uk

Website: www.st-bartholomews.brighton-hove.sch.uk

Headteacher: Ms K Blood

Deputy Headteacher: Miss F Keeling

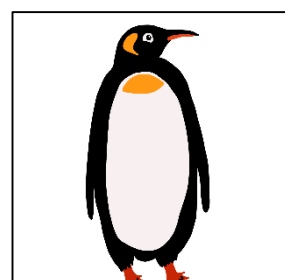
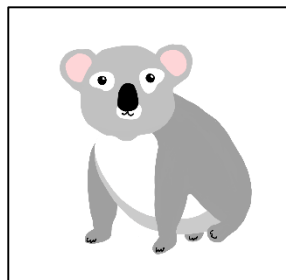
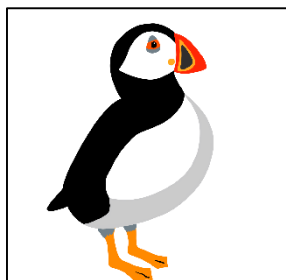
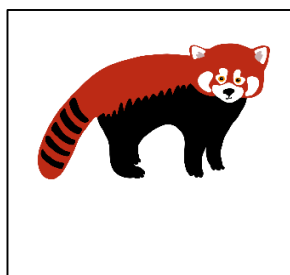
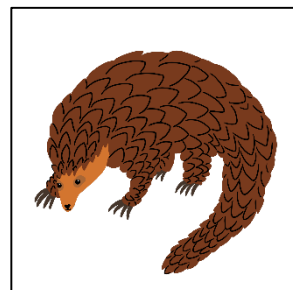
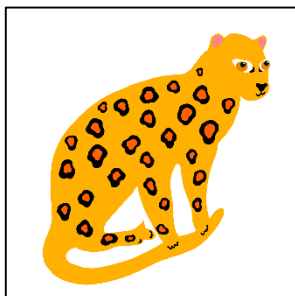
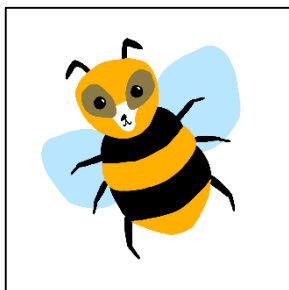


BRIGHTON CITY
PARTNERSHIP
FOR EDUCATION

• Thriving Children • Successful Schools • Healthy Communities •

AMAZING New Art Work

You will have noticed that we have some wonderful new art up around the school. Firstly, Miss Charlton who is a very talented artist has created an incredible animal picture for each class. She has then used these to create a range of beautiful posters that are beginning to appear both inside and outside the school. We are so lucky to have her working with us and thank her for all the time that she has spent on these – it really is above and beyond and we appreciate it.



Our school walls in Ann Street and New England Street have always been a target for tagging, making the school look a little unkempt. Therefore, we commissioned a local graffiti artist to create some beautiful murals on our school walls. She was able to get sponsorship from International Animal Rescue for the mural near the Pupil Entrance which helped reduce the cost. Once she has finished, you should be able to see all of our class animals and a few more gorgeous creatures.



Puffins and Koala

On a Tuesday and Wednesday afternoon, Koala Class and Puffin Class will be working together. On Tuesdays, all children will be working with Miss Rhodes and will need collecting from Puffin Classroom and on Wednesdays, they will be with Mrs Allaway and need to be collected from Koala Classroom. On Wednesday afternoons, they will also be working with a coach from Albion in the Community in their PE lessons, which should be a really exciting time!

St Bartholomew's Primary School Newsletter



St. Bartholomew's Church of England Primary School
Ann Street, Brighton, East Sussex, BN1 4GP

Telephone: 01273 692463 Fax: 01273 645239
Email: admin@st-bartholomews.brighton-hove.sch.uk
Website: www.st-bartholomews.brighton-hove.sch.uk

Headteacher: Ms K Blood
Deputy Headteacher: Miss F Keeling



Albion in the Community and Yoga

We have a coach from Albion in the Community working with us again this term to support pupils develop sport, social and confidence in their learning. They will be working with children across the school and providing some opportunities at lunchtime for Red Pandas, Penguins, Pangolins and Jaguars.

Walk to School Week

Next month is 'Walk to School Week'. Pupils across Brighton and Hove are encouraged to come to school in an 'active way' from Monday 5th October – Friday 9th October.

Despite the name of the week, pupils are not restricted to just walking to school. If pupils prefer, and have permission from home, they can also scoot, skate or cycle to school (as long as they wear a helmet).

The first aim of the week is simply to encourage pupils to be even more active and to make even healthier lifestyle choices, on their journeys to and from school. The second aim of the week is to promote methods of travel that make the air we breathe even cleaner.

Pupils who live a distance from school can still participate by getting off the bus a stop earlier or by parking the car a short distance from school and walking the final stretch.

All pupils who come to school in an active way for **all 5 of the days** will be entered into a **special draw** to win some great prizes!

We hope that your child will be able to participate in this event and we wish them the best of luck in the prize draw!

Church School

Father Ben

We also welcome Father Ben to school. He is the new priest at St Bartholomew's Church and has now been in school for collective worship and is keen to get involved in school in other ways.

Bible Verse

Do nothing out of selfish ambition or vain conceit. Rather, in humility value others above yourselves, not looking to your own interests but each of you to the interests of the others. Philippians 2:3-4

St Bartholomew's Primary School Newsletter



St. Bartholomew's Church of England Primary School
Ann Street, Brighton, East Sussex, BN1 4GP

Telephone: 01273 692463 Fax: 01273 645239
Email: admin@st-bartholomews.brighton-hove.sch.uk
Website: www.st-bartholomews.brighton-hove.sch.uk

Headteacher: Ms K Blood
Deputy Headteacher: Miss F Keeling



Reminders and Notices

Start and End of Day

Thank you to you as parents and carers for adapting to new routines as well – we have been really appreciative of everyone's cooperation.

- Please wear a face covering when dropping off and collecting – although its outside, it can get crowded and is quite an enclosed space. We know face coverings are not super convenient but it shows you care for others when you wear one. We also acknowledge that some parents will be exempt from wearing a face covering.
- Please continue to use the one-way system in and out of the school grounds – old habits are hard to break but thank you to all of those who are remembering.
- Children in Bumblebee, Puffin and Koala Class can be collected between 2.50pm and 3.00pm
- Children in Red Panda and Penguin Class can be collected between 3.00pm and 3.10pm.
- Children in Pangolin and Jaguar Class can be collected at 3.10pm.
- To ease congestion, if you feel your Year 5 or 6 child can be trusted to leave the school premises by themselves, it would be really helpful. You could arrange to meet them at agreed place near the school.
- If you would still like to come into the playground to collect your Jaguar or Pangolin, please wait by the gym equipment until 3.10pm. At that time, you can then move into to Reception playground. If you wait in the Reception playground BEFORE 3.10pm, it makes the exit very congested and unsafe for families.
- Please **leave the playground** as soon as your child comes out – do not wait in the playground unless you are waiting for siblings.
- If you do wait in the playground, please remember that your child is your responsibility and should be supervised (you should be able to see them) at all times, including when using the play equipment.
- Children **MUST NOT** use the top playground after school.

I need to also remind you that all parents should behave appropriately in the school playground and should set a positive example to our children. I am upset that I need to remind parents that swearing and derogatory language are not appropriate in the school grounds – this includes the waiting areas and the school car park. Smoking is also not allowed ANYWHERE on the school premises.

I have the right to ban parents from the school grounds for inappropriate behaviour if needed – let's hope it isn't necessary. On the flip side to this, if you see a parent who is struggling, in any way, please offer them compassion and care rather than judgement.

Illness

If you OR your child have **ANY** of these 3 symptoms:

1. Cough
2. Temperature
3. Change in sense of taste or smell

St Bartholomew's Primary School Newsletter



St. Bartholomew's Church of England Primary School

Ann Street, Brighton, East Sussex, BN1 4GP

Telephone: 01273 692463 Fax: 01273 645239

Email: admin@st-bartholomews.brighton-hove.sch.uk

Website: www.st-bartholomews.brighton-hove.sch.uk

Headteacher: Ms K Blood

Deputy Headteacher: Miss F Keeling



BRIGHTON CITY
PARTNERSHIP
FOR EDUCATION

• Thriving Children • Successful Schools • Healthy Communities •

you must stay at home and arrange a Covid-19 test. Please inform the school office as soon as possible on 01273 692463 if this is the case.

We understand that at this time of year, children get colds. They are fine to come to school if they have a cold - just not if they have a temperature or a new, persistent cough.

For more information about coronavirus in children, visit: <https://www.nhs.uk/conditions/coronavirus-covid-19/symptoms/>

The following website also provides government coronavirus guidance translated into a number of different languages: <https://www.doctorsoftheworld.org.uk/coronavirus-information/>

Asthma Card

If your child has asthma, they must have an in-date asthma pump in school and you must complete an Asthma Card – this will be sent via SchoolPing and will eventually be available to download from the school website. If you are unable to print this yourself, please call the school office who will send a printed one home with your child. It is a requirement that you complete one of these.

Lunches

School dinners are available for every child and are prepared in a Covid safe environment. The cost of meals is £2.20 per day and must be paid for through ParentPay. All children in Bumblebee, Puffin and Koala Class are entitled to free school meals every day. If you are in receipt of certain benefits, your child may be entitled to free school meals – please email the school office on admin@st-bartholomews.brighton-hove.sch.uk. It's important to do this even if your child is in the infants as it also entitles your child to additional funding in school.

If your child does bring a packed lunch in, please remember:

- Food should be part of a healthy, balanced diet
- No sweets or chocolate
- No nuts in any form
- No glass bottles or containers
- No fizzy drinks, including fizzy water.

We usually encourage children to bring their rubbish home in their lunchbox as you can then see what they have eaten. We understand that it can make for a messy lunchbox but it's important you know what they have and haven't eaten each day.

PTFA and Fundraising

Currently, we have not planned any PTFA meetings as many of the usual events we have to raise money, would not be Covid Secure. However, if anyone has any brilliant ways to raise money, that don't involve large gatherings, we would love to hear them. I would hope that we can at least start meeting as a PTFA after half term.

Our PTFA is our Parents, Teachers and Friends Association which supports the school by providing

St Bartholomew's Primary School Newsletter



St. Bartholomew's Church of England Primary School

Ann Street, Brighton, East Sussex, BN1 4GP

Telephone: 01273 692463 Fax: 01273 645239

Email: admin@st-bartholomews.brighton-hove.sch.uk

Website: www.st-bartholomews.brighton-hove.sch.uk

Headteacher: Ms K Blood

Deputy Headteacher: Miss F Keeling



BRIGHTON CITY
PARTNERSHIP
FOR EDUCATION

• Thriving Children • Successful Schools • Healthy Communities •

additional activities and raising money to support the school. EVERYONE is welcome to join – in fact the more, the merrier!

Equally, if we have any parents who could give up some time applying for grants, we would be really grateful. There are lots out there, even for small amounts, which would make a HUGE difference to us. Most can be done online and we would provide you with the information that you need.

School Uniform

Please remember that we no longer sell uniform in school – if you would like uniform with the school logo on, this can be purchased via the link below, but it is not essential. Any grey or yellow jumper is fine!

<https://www.schooltrends.co.uk/uniform/StBartholomewsCOFPrimarySchoolBrightonBN14GP>

Kind Regards

Katie Blood.

Katie Blood
Headteacher

St Bartholomew's Primary School

Newsletter



St. Bartholomew's Church of England Primary School

Ann Street, Brighton, East Sussex, BN1 4GP

Telephone: 01273 692463 Fax: 01273 645239

Email: admin@st-bartholomews.brighton-hove.sch.uk

Website: www.st-bartholomews.brighton-hove.sch.uk

Headteacher: Ms K Blood

Deputy Headteacher: Miss F Keeling



• Thriving Children • Successful Schools • Healthy Communities •

Calendar Dates

Please note that these dates are subject to change dependent on coronavirus guidance

October 1-31 st Black History Month 14 th – Open Session for new Reception parents (9.15 – 10.15am) 15 th – Harvest Celebration 19 th – Parent Consultation Evening KS1 (3.50 – 5.30pm) 20 th – Parent Consultation Evening KS2 (3.50 – 5.30pm) 21 st – Parent Consultation Evening KS1 (3.30 – 7pm) 22 nd – Parent Consultation Evening KS2 (3.30 – 7pm) 23 rd – Non Uniform Day – Orang-utan Project 23 rd – Last day of half term	November 2 nd – Pupils return 13 th – Children in Need W/B 16 th – Anti Bullying Week 18 th – Open Session for new Reception parents (9.15 – 10.15am) 28 th – Made Fair (11 – 5pm)
December 2 nd – Prospective Parents Presentation (6.30pm) 3 rd – Open Session for new Reception parents (9.15 – 10.15) 17 th – Carol Service at Church led by Year 6 (2pm) 18 th – Non Uniform Day – School Fund 18 th – Last day of term	January 4 th – INSET day 5 th – INSET day 6 th – Pupils return 13 th – Open Session for new Reception parents (9.15 – 10.15)
February 12 th – Non Uniform Day – World Wildlife Fund 12 th – Last day of term	March 4 th – World Book Day 16 th – Year 5 Parents Meeting – PGL (2.15pm) 19 th – Comic Relief 23 rd – Parent Consultations (3.30 – 5.30pm) 25 th – Parent Consultations (3.30 – 7pm)
April 1 st – Non Uniform Day – Connor Saunders Foundation 1 st – Easter Parade and Mass 1 st Last day of term 19 th – Pupils return 26 th – Attendance Awards Activities	May 7 th – Pangolin Class Assembly 18 th – Red Panda Class Assembly 21 st – Penguin Class Assembly 28 th – Non Uniform Day – School Fund 28 th – Last day of half term
June 7 th – INSET Day 8 th – Pupils return 18 th – Koala Class Assembly 25 th – Puffin Class Assembly 29 th – Sports Day (2pm) 30 th – Reserve Sports Day (2pm)	July 2 nd – Bumblebee Class Assembly 6 th – New Reception Children Visit with Parents (9.15 – 10.15am) 7 th – Reports out 9 th – Summer Party (3.15 – 5pm) 13 th – New Reception Children Visit and parents meeting (9.15 – 10.15am) 13 th – Shuffle through session (11-12) 16 th – Shuffle through session (11-12) 19 th – Non Uniform Day – Food Bank 14 th – Report drop-in 16 th – Year 6 Leaver's Disco (2.30 – 4pm) 20 th – New Reception Children visit (9.15 – 10.15am) 22 nd – Leavers' Assembly 23 rd – Last day of term